

MONTHLY SUMMARY OF STATISTICS

VICTORIA

EMBARGO: 11:30AM (CANBERRA TIME) MON 20 APR 1998

CONTENTS

	<i>page</i>
Notes	2
Selected features	3
TABLES	
List of tables	6
Demography	7
Labour	8
Wages and prices	11
Meat production	13
Building	14
Finance	17
Retail	18
Trade	19
Tourism	20
ADDITIONAL INFORMATION	
List of references	21

- For information about other ABS statistics and services, please refer to the back page of this publication.
- For further information about these statistics, contact Information Services on Melbourne (03) 9615 7000.

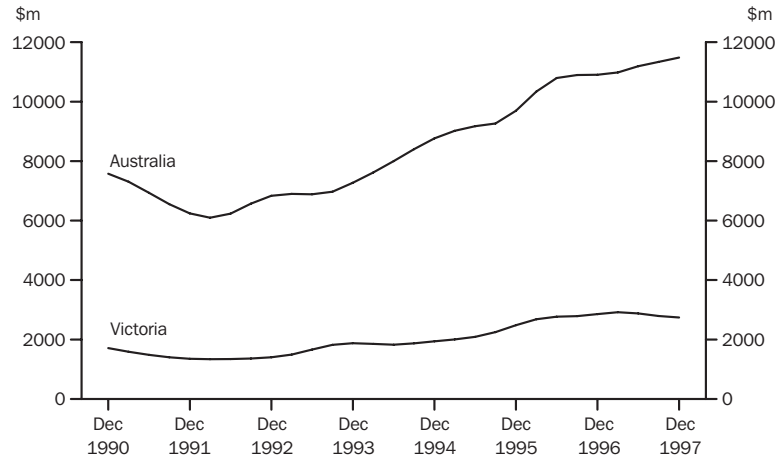
NOTES

FORTHCOMING ISSUES	<i>ISSUE</i>	<i>RELEASE DATE</i>
	April 1998	20 May 1998
	May 1998	19 June 1998
	June 1998	20 July 1998
ABOUT THIS PUBLICATION	The aim of this publication is to provide users with a range of the latest statistics available at the end of each month of issue. Consequently, the dates and periods shown are not always the same for each table, but are in each case the latest figures available at that time.	
SEASONAL ADJUSTMENT	Seasonal adjustment is a means of removing the estimated effects of normal seasonal variations from economic time series so that the effects of other influences are obvious. Seasonal variations are the systematic (though not necessarily regular) intra-year movements of economic time series. These are often the result of non-economic phenomena, such as climatic changes and regular religious festivals e.g. Christmas and Easter.	
TREND ESTIMATE	Smoothing seasonally adjusted series produces a measure of trend by removing the impact of the irregular component of the series. The trend estimates are derived by applying a 13-term Henderson weighted moving average to the respective seasonally adjusted series. Readers are reminded that trend estimates are subject to revision as subsequent months' data become available.	
SYMBOLS AND OTHER USAGES	n.a. not available n.e.c. not elsewhere classified n.p. not available for publication but included in totals where applicable n.y.a. not yet available p preliminary — figure or series subject to revision r figure or series revised since previous issue * estimate has a relative standard error greater than 25% and is therefore subject to sampling variability too high for most practical uses . . not applicable — nil or rounded to zero	

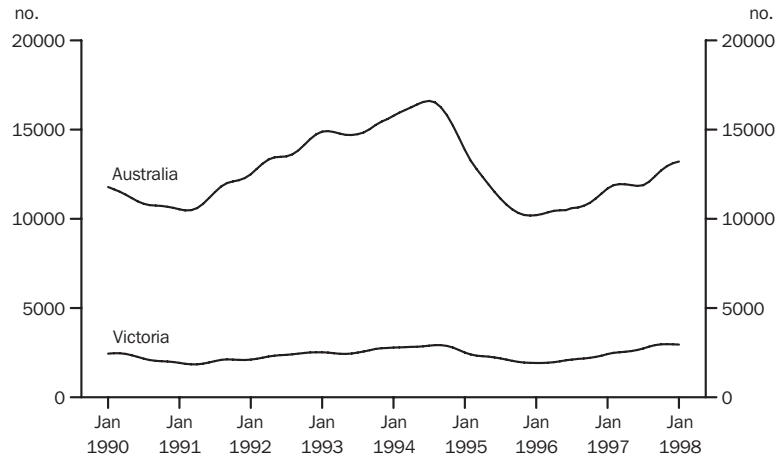
Ian Crettenden
Regional Director

SELECTED FEATURES

PRIVATE NEW CAPITAL
EXPENDITURE
Trend, quarterly



NEW DWELLING UNITS
APPROVED
Trend, monthly

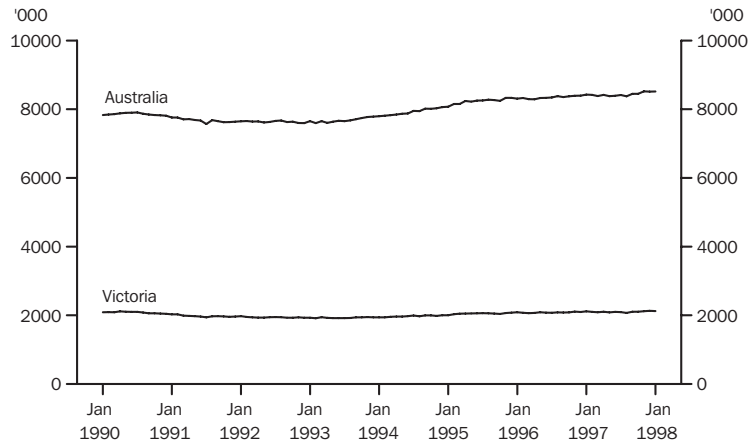


TOTAL VALUE OF SECURED
HOUSING FINANCE
COMMITMENTS TO
INDIVIDUALS
Trend, monthly

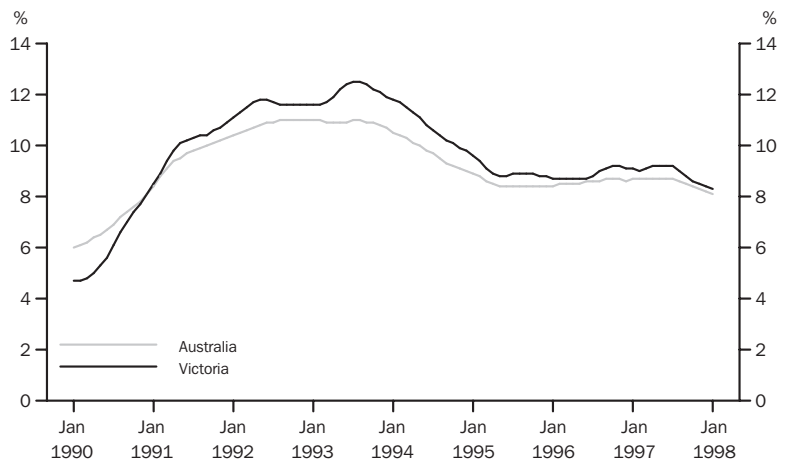


SELECTED FEATURES *continued*

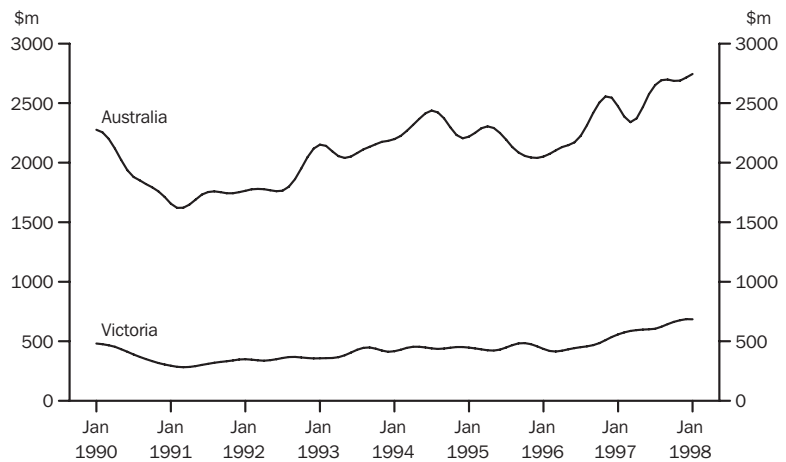
EMPLOYED PERSONS
Trend, monthly



UNEMPLOYMENT RATE
Trend, monthly

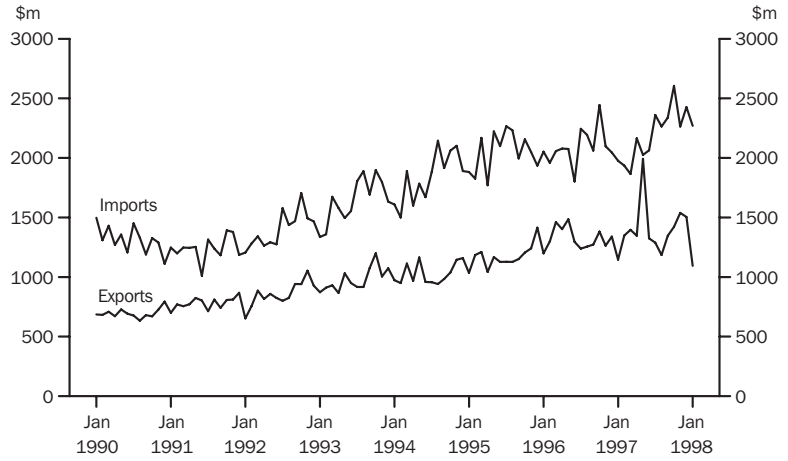


VALUE OF ALL BUILDINGS
APPROVED
Trend, monthly

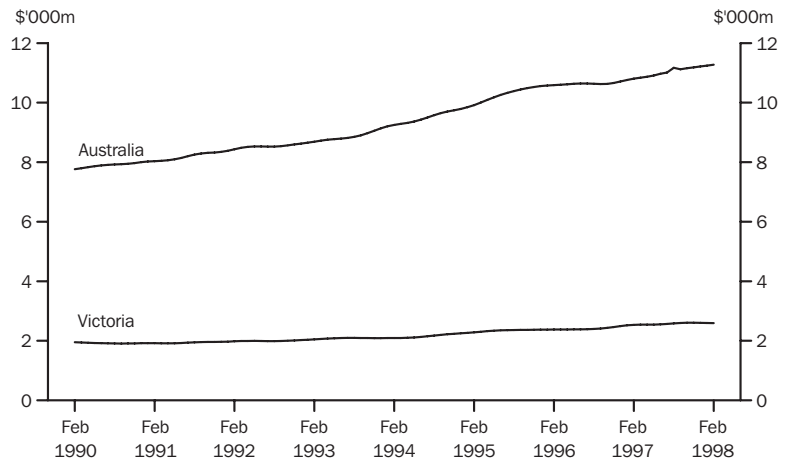


SELECTED FEATURES *continued*

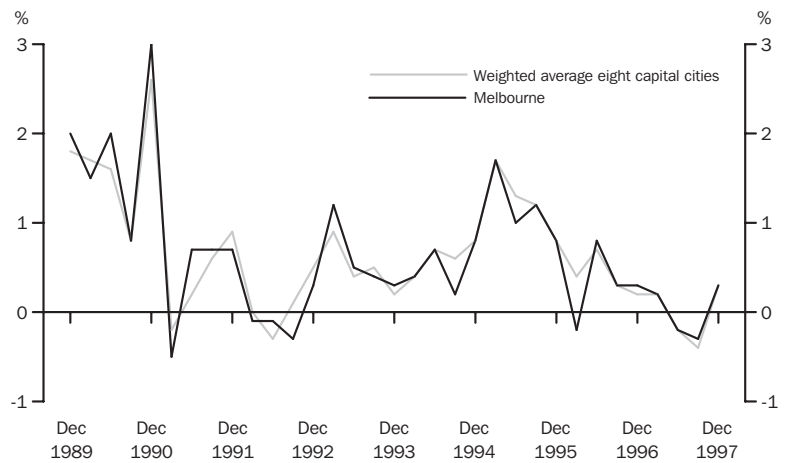
**MERCHANDISE IMPORTS
AND EXPORTS**
Original, monthly



RETAIL TURNOVER
Trend, monthly



CONSUMER PRICE INDEX
Change from previous
quarter



LIST OF TABLES

		Page
Demography	1 Estimated resident population	7
	2 Births, deaths, marriages and divorces	7
Labour	3 Labour force status of the civilian population aged 15 years and over	8
	4 Employed persons, by industry	9
	5 Job vacancies	10
	6 Industrial disputes causing stoppage of work	10
Wages and prices	7 Average weekly earnings of employees (original series)	11
	8 Consumer Price Index — Melbourne	12
	9 Price Index of Materials Used in Building — Melbourne	12
Meat production	10 Livestock slaughterings	13
	11 Meat production	13
Building	12 Building approvals — Melbourne and Victoria	14
	13 New houses and other residential buildings, number of dwelling units	15
	14 Value of building	16
Finance	15 Private new capital expenditure, by selected industries and type of asset	17
	16 Commercial finance commitments	17
	17 Secured housing finance commitments	18
Retail	18 Retail turnover, by industry (excl. motor vehicles, parts, petrol, etc.)	18
Trade	19 Exports and imports, by sections of the Australian Export and Import Classifications	19
	20 Overseas trade, major trading partners	19
	21 Value of overseas trade — Victoria and Australia	20
Tourism	22 Tourist accommodation — Melbourne and Victoria	20

1

ESTIMATED RESIDENT POPULATION

Period	At end of period			Increase during period		Mean estimated resident population for year ended		Melbourne Statistical Division at 30 June(a)
	Males	Females	Persons	Natural	Total	30 Jun	31 Dec	
	'000	'000	'000	'000	'000	'000	'000	'000
1994-95	2 233.4	2 284.0	4 517.4	31.3	28.6	4 502.1	4 518.6	3 243.7
1995-96	2 252.6	2 307.5	4 560.2	28.5	42.8	4 539.4	4 560.9	3 283.3
1996-97 p	2 274.3	2 330.9	4 605.1	28.3	45.0	4 583.0	—	3 321.7
1996								
June qtr	2 252.6	2 307.5	4 560.2	6.7	8.8
September qtr p	2 257.8	2 313.2	4 571.0	6.3	10.9
December qtr p	2 262.5	2 318.8	4 581.3	7.1	10.2
1997								
March qtr p	2 269.9	2 326.2	4 596.1	7.6	14.8
June qtr p	2 274.3	2 330.9	4 605.1	7.3	9.1
September qtr p	2 280.4	2 337.0	4 617.4	6.4	12.3

(a) Based on the 1996 Statistical Local Area boundaries. Years 1992 to 1995 are yet to be revised based on the 1996 Census results and are therefore excluded from this table.

2

BIRTHS, DEATHS, MARRIAGES AND DIVORCES

Period	Registrations				Annual rate per 1,000 of mean estimated resident population				
	Births	Deaths (including infant deaths)	Marriages	Divorces	Births	Deaths	Marriages	Divorces	Infant deaths per 1,000 live births
	no.	no.	no.	no.	rate	rate	rate	rate	rate
1994-95	63 960	32 291	26 831	11 602	14.26	7.20	5.98	2.59	5.19
1995-96	60 954	32 494	26 117	12 002	13.48	7.19	5.78	2.65	5.28
1996-97 p	61 628	32 595	25 664	13 045	13.45	7.11	5.60	2.85	4.71
1996									
June qtr	15 287	7 955	6 140	2 891
September qtr	14 957	8 589	3 840	3 530
December qtr	16 352	8 508	7 723	3 398
Year — 1996	61 529	32 714	26 074	12 491	13.33	7.14	5.69	2.73	5.09
1997									
March qtr p	15 084	7 423	8 102	2 809
June qtr p	15 730	8 372	5 999	3 308
September qtr p	15 761	9 211	3 814	3 164

LABOUR FORCE STATUS OF THE CIVILIAN POPULATION AGED 15 YEARS AND OVER

Month	EMPLOYED		UNEMPLOYED LOOKING FOR WORK			Labour force	Not in labour force	Civilian population 15 years and over	Unemployment rate	Participation rate
	Full-time Total	Total	Full-time	Part-time	Total					
	'000	'000	'000	'000	'000	'000	'000	'000	%	%
MALES										
1996										
December	1 059.4	1 201.7	103.4	16.4	119.8	1 321.5	447.4	1 768.8	9.1	74.7
1997										
January	1 050.9	1 184.8	108.4	16.6	125.0	1 309.8	460.3	1 770.2	9.5	74.0
February	1 049.8	1 180.9	113.2	19.2	132.4	1 313.3	458.2	1 771.5	10.1	74.1
March	1 037.5	1 184.1	104.8	20.0	124.8	1 308.9	463.9	1 772.9	9.5	73.8
April	1 044.3	1 186.3	97.1	19.3	116.5	1 302.8	472.0	1 774.8	8.9	73.4
May	1 040.9	1 183.3	101.9	13.8	115.7	1 299.0	477.7	1 776.7	8.9	73.1
June	1 033.1	1 182.8	104.0	15.8	119.8	1 302.6	476.0	1 778.6	9.2	73.2
July	1 039.7	1 185.2	98.3	14.0	112.3	1 297.5	483.0	1 780.6	8.7	72.9
August	1 022.4	1 168.7	100.2	15.2	115.4	1 284.0	498.5	1 782.5	9.0	72.0
September	1 037.0	1 189.1	100.8	22.6	123.5	1 312.6	471.9	1 784.5	9.4	73.6
October	1 043.0	1 195.9	85.9	15.2	101.1	1 297.0	489.5	1 786.5	7.8	72.6
November	1 048.8	1 194.0	89.5	15.4	104.8	1 298.8	489.6	1 788.4	8.1	72.6
December	1 064.4	1 220.2	86.4	23.1	109.5	1 329.7	460.7	1 790.4	8.2	74.3
1998										
January	1 054.8	1 185.7	102.0	20.4	122.4	1 308.1	484.2	1 792.2	9.4	73.0
February	1 065.0	1 202.5	96.1	20.6	116.7	1 319.2	474.8	1 794.0	8.8	73.5
FEMALES										
1996										
December	520.2	918.1	63.6	32.0	95.6	1 013.7	833.1	1 846.8	9.4	54.9
1997										
January	511.9	888.2	64.1	24.1	88.2	976.4	871.9	1 848.3	9.0	52.8
February	511.1	903.0	72.0	29.6	101.7	1 004.7	845.0	1 849.7	10.1	54.3
March	501.2	904.3	63.3	32.5	95.8	1 000.1	851.0	1 851.1	9.6	54.0
April	503.8	914.2	63.0	30.4	93.4	1 007.7	845.4	1 853.1	9.3	54.4
May	503.7	907.5	61.9	30.8	92.7	1 000.2	854.9	1 855.1	9.3	53.9
June	512.1	921.1	60.6	27.0	87.6	1 008.8	848.3	1 857.1	8.7	54.3
July	523.1	917.8	56.3	25.7	82.0	999.8	859.3	1 859.0	8.2	53.8
August	498.5	891.5	57.8	29.0	86.7	978.2	882.7	1 861.0	8.9	52.6
September	520.4	932.9	59.1	29.0	88.1	1 021.0	841.9	1 862.9	8.6	54.8
October	511.9	916.1	55.4	27.3	82.8	998.8	866.0	1 864.8	8.3	53.6
November	505.6	922.1	53.2	26.5	79.7	1 001.8	865.0	1 866.8	8.0	53.7
December	530.2	934.8	55.9	26.3	82.2	1 016.9	851.8	1 868.7	8.1	54.4
1998										
January	513.3	893.6	60.9	28.5	89.4	983.0	887.4	1 870.5	9.1	52.6
February	526.6	387.3	62.9	27.9	90.8	1 004.6	867.5	1 872.2	9.0	53.7
PERSONS										
1996										
December	1 579.5	2 119.8	167.0	48.4	215.4	2 335.2	1 280.5	3 615.7	9.2	64.6
1997										
January	1 562.8	2 073.0	172.5	40.7	213.2	2 286.2	1 332.2	3 618.4	9.3	63.2
February	1 560.9	2 084.0	185.2	48.9	234.1	2 318.0	1 303.2	3 621.2	10.1	64.0
March	1 538.7	2 088.4	168.1	52.5	220.6	2 309.0	1 315.0	3 624.0	9.6	63.7
April	1 548.1	2 100.6	160.2	49.7	209.9	2 310.5	1 317.4	3 627.9	9.1	63.7
May	1 544.6	2 090.8	163.8	44.7	208.4	2 299.2	1 332.6	3 631.8	9.1	63.3
June	1 545.2	2 103.9	164.6	42.9	207.5	2 311.4	1 324.4	3 635.7	9.0	63.6
July	1 562.8	2 103.0	154.6	39.7	194.3	2 297.3	1 342.3	3 639.6	8.5	63.1
August	1 520.9	2 060.2	157.9	44.2	202.1	2 262.3	1 381.2	3 643.5	8.9	62.1
September	1 557.5	2 122.1	159.9	51.7	211.6	2 333.6	1 313.8	3 647.4	9.1	64.0
October	1 554.8	2 111.9	141.1	42.5	183.9	2 295.8	1 355.5	3 651.3	8.0	62.9
November	1 554.4	2 116.1	142.7	41.8	184.5	2 300.6	1 354.6	3 655.2	8.0	62.9
December	1 594.6	2 155.0	142.3	49.3	191.7	2 346.7	1 312.5	3 659.2	8.2	64.1
1998										
January	1 568.1	2 079.3	162.8	48.9	211.8	2 291.1	1 371.6	3 662.7	9.2	62.6
February	1 591.6	2 116.3	159.0	48.5	207.5	2 323.8	1 342.4	3 666.2	8.9	63.4

4

EMPLOYED PERSONS, BY INDUSTRY

	Nov 1996	Feb 1997	May 1997	Aug 1997	Nov 1997	Feb 1998
<i>Industry division</i>	'000	'000	'000	'000	'000	'000
MALES						
Agriculture, forestry and fishing	71.1	79.0	70.2	58.7	55.9	68.0
Mining	4.6	*3.3	*3.0	*2.5	*3.2	*3.1
Manufacturing	262.6	255.3	253.0	249.8	250.3	247.5
Electricity, gas and water supply	11.2	10.4	12.4	13.4	9.9	11.6
Construction	118.0	106.7	104.9	110.9	115.9	121.6
Wholesale trade	86.9	84.9	92.4	84.9	88.0	92.1
Retail trade	159.7	158.2	157.5	150.6	158.4	159.7
Accommodation, cafes and restaurants	30.7	32.0	35.2	37.0	37.6	31.9
Transport and storage	66.2	73.9	78.4	74.8	73.5	82.9
Communication services	32.0	25.8	25.2	24.5	22.4	22.1
Finance and insurance	36.8	36.2	43.3	42.8	46.3	42.3
Property and business services	115.4	117.8	121.3	130.8	130.7	130.1
Government administration and defence	42.1	39.0	33.4	29.2	38.4	37.4
Education	52.4	47.8	47.6	48.4	52.9	49.1
Health and community services	45.8	38.5	35.6	37.5	39.7	36.4
Cultural and recreational services	20.3	26.5	21.5	25.8	28.3	28.2
Personal and other services	36.8	45.6	48.4	47.0	42.5	38.3
Total	1 192.4	1 180.9	1 183.3	1 168.7	1 194.0	1 202.5
FEMALES						
Agriculture, forestry and fishing	33.7	34.1	35.2	28.0	30.8	35.4
Mining	*0.5	*0.5	*0.0	*0.0	*0.3	*0.3
Manufacturing	99.8	97.5	95.7	93.7	107.4	95.2
Electricity, gas and water supply	*2.1	*2.9	*2.1	*1.8	*1.9	*2.6
Construction	16.3	14.6	14.1	15.0	15.8	16.5
Wholesale trade	39.6	38.5	41.4	38.1	41.5	39.5
Retail trade	166.9	156.3	151.3	150.0	157.8	160.5
Accommodation, cafes and restaurants	46.4	45.6	49.9	49.0	47.9	46.3
Transport and storage	20.8	25.1	23.9	18.1	18.7	19.8
Communication services	18.2	17.4	14.0	16.8	15.9	14.2
Finance and insurance	40.5	44.6	49.8	47.8	42.2	40.5
Property and business services	101.3	91.4	94.6	107.6	101.5	105.3
Government administration and defence	40.7	44.3	41.7	39.3	41.9	34.1
Education	89.4	84.7	89.2	90.7	89.0	85.9
Health and community services	141.9	147.0	145.1	144.7	148.9	158.2
Cultural and recreational services	20.3	23.2	21.9	19.4	25.3	21.8
Personal and other services	35.0	35.4	39.6	31.4	35.0	37.9
Total	913.3	903.0	907.5	891.5	922.1	913.8
PERSONS						
Agriculture, forestry and fishing	104.7	113.1	103.4	86.8	86.7	103.4
Mining	5.1	*3.8	*3.0	*2.5	*3.6	*3.4
Manufacturing	362.4	352.7	348.7	343.5	357.7	342.6
Electricity, gas and water supply	13.3	13.3	14.5	15.2	11.9	14.2
Construction	134.2	121.4	119.0	125.9	131.7	138.1
Wholesale trade	126.5	123.4	133.8	123.1	129.5	131.6
Retail trade	326.5	314.5	308.8	300.5	316.2	320.2
Accommodation, cafes and restaurants	77.1	77.6	85.1	86.0	85.5	78.1
Transport and storage	86.9	99.0	102.3	92.9	92.2	102.8
Communication services	50.3	43.2	39.1	41.3	38.3	36.3
Finance and insurance	77.2	80.8	93.1	90.6	88.5	82.8
Property and business services	216.7	209.1	215.9	238.5	232.2	235.4
Government administration and defence	82.8	83.3	75.1	68.5	80.3	71.5
Education	141.8	132.5	136.8	139.0	142.0	135.0
Health and community services	187.6	185.5	180.7	182.2	188.6	194.6
Cultural and recreational services	40.6	49.7	43.4	45.2	53.6	50.0
Personal and other services	71.8	81.0	88.0	78.4	77.6	76.2
Total	2 105.7	2 084.0	2 090.8	2 060.2	2 116.1	2 116.3

5

JOB VACANCIES

Month	Vacancies all persons '000	Industry		Sector		Job vacancy rate %
		Manufacturing '000	Other '000	Public '000	Private '000	
1996						
August	13.6	*2.0	11.6	1.7	11.9	0.83
November	12.8	2.0	10.8	1.9	10.9	0.75
1997						
February	12.8	*3.3	9.5	1.7	*11.1	0.75
May	11.5	*2.1	9.4	1.9	9.6	0.66
August	17.4	1.5	15.8	2.4	*14.9	0.97
November	*17.9	1.1	*16.8	2.3	*15.6	*0.97

6

INDUSTRIAL DISPUTES CAUSING STOPPAGE OF WORK

Period	Disputes		Employees involved		Manufacturing '000	Construction '000	Education, health, community services '000	Working days lost	
	Beginning in period no.	Total no.	Beginning in period '000	Total '000				Other industries '000	Total '000
1996									
October	11	13	3.0	3.4	4.3	1.2	0.5	0.1	6.0
November	9	12	15.3	15.4	1.9	—	10.2	1.6	13.7
December	9	11	1.6	5.5	1.0	0.4	1.9	0.6	3.9
1997									
January	3	5	0.9	1.4	—	1.1	—	0.1	1.1
February	6	7	9.9	10.3	—	3.0	7.7	—	10.7
March	8	8	8.8	8.8	0.5	2.3	—	5.3	8.1
April	11	12	4.7	5.1	9.2	1.5	—	0.5	11.2
May	16	19	7.6	9.8	11.6	0.6	0.4	3.9	16.5
June	7	13	2.0	5.1	3.5	0.2	1.2	2.5	7.4
July	11	14	9.0	9.4	2.3	0.5	—	7.2	10.0
August	11	14	1.9	4.0	0.2	0.9	0.3	4.0	5.4
September	14	18	4.8	7.3	11.2	1.0	0.1	6.0	18.3
October	10	12	51.0	51.8	31.8	18.6	1.2	6.6	58.2
November	7	12	21.3	45.7	17.1	10.4	14.8	2.0	44.3
December	6	11	4.0	15.4	7.6	3.7	—	4.2	15.5

7

AVERAGE WEEKLY EARNINGS OF EMPLOYEES

<i>Reference period</i>	<i>Males</i>			<i>Females</i>			<i>Persons</i>		
	<i>Full-time adult ordinary time earnings</i>	<i>Full-time adult total earnings</i>	<i>All males total earnings</i>	<i>Full-time adult ordinary time earnings</i>	<i>Full-time adult total earnings</i>	<i>All females total earnings</i>	<i>Full-time adult ordinary time earnings</i>	<i>Full-time adult total earnings</i>	<i>All employees total earnings</i>
	\$	\$	\$	\$	\$	\$	\$	\$	\$
1996									
August	697.6	756.0	662.3	588.0	601.7	432.3	659.7	702.6	557.8
November	720.3	791.8	686.5	607.1	625.8	443.8	681.2	734.5	577.5
1997									
February	726.6	782.5	687.7	611.9	625.9	462.4	687.7	729.4	590.0
May	736.9	789.1	676.2	618.5	636.7	453.9	693.9	733.8	572.7
August	754.2	812.7	695.2	625.8	643.4	460.4	708.1	751.9	587.2
November	748.5	807.6	714.9	632.9	653.1	463.6	708.1	753.6	600.6

8

CONSUMER PRICE INDEX — MELBOURNE

Period	Melbourne									
	Food	Clothing	Housing	Household equipment and operation	Transportation	Tobacco and alcohol	Health and personal care	Recreation and education	All groups	Weighted average of eight capital cities — All groups
1994-95	110.1	107.4	97.5	111.1	118.8	137.3	142.4	116.7	114.1	113.9
1995-96	114.1	108.0	101.4	113.0	122.6	154.2	148.7	120.3	118.4	118.7
1996-97	118.6	108.4	95.0	114.7	124.0	158.5	157.1	123.3	119.9	120.3
1996										
September qtr	117.5	108.5	99.6	114.2	123.1	158.3	152.0	121.1	119.6	120.1
December qtr	118.4	108.4	96.7	114.9	124.1	158.0	155.3	122.0	119.9	120.3
1997										
March qtr	118.8	108.1	93.5	114.6	125.1	158.4	158.4	125.2	120.1	120.5
June qtr	119.6	108.4	90.1	115.0	123.8	159.4	162.7	124.8	119.9	120.2
September qtr	119.8	108.5	88.7	114.6	124.6	158.6	157.3	126.0	119.5	119.7
December qtr	119.7	109.2	86.9	115.4	124.4	161.2	162.2	126.2	119.8	120.0

Base of each group: year 1989-90=100.0

9

PRICE INDEX OF MATERIALS USED IN BUILDING — MELBOURNE

Group	1997						Weighted average of six state capital cities — Dec qtr 1997
	1994-95	1995-96	1996-97	Jun qtr	Sept qtr	Dec qtr	
House building							
All groups	115.9	115.4	115.3	115.8	116.1	116.6	117.9
Other than house building							
Structural timber	123.0	116.1	110.1	112.8	114.4	115.3	119.9
Clay bricks	112.3	112.1	113.1	114.6	116.1	116.1	112.7
Ready mix concrete	124.2	118.6	111.5	112.0	111.2	111.4	107.2
Precast concrete products	104.8	108.1	110.3	111.8	111.8	112.4	119.2
Steel decking and cladding	106.5	109.9	109.2	111.3	110.4	110.5	115.2
Structural steel	95.3	100.9	104.2	105.1	105.1	105.1	113.6
Reinforcing steel bar, mesh, etc.	101.8	102.7	100.7	100.6	100.6	100.8	112.7
Aluminium windows	98.8	100.8	100.6	100.5	100.4	100.7	109.0
Fabricated steel products	110.7	113.1	116.7	119.3	119.3	119.5	116.3
Builders' hardware	113.7	114.5	116.5	117.8	118.6	119.5	119.0
Sand and aggregate	118.5	114.6	115.9	116.8	116.4	116.4	121.1
Carpet	98.5	101.6	101.6	102.9	102.9	102.9	102.2
Paint and other coatings	131.2	141.2	145.8	142.3	143.5	143.5	135.7
Non-ferrous pipes and fittings	100.8	112.2	111.5	112.6	113.8	118.7	138.0
All groups excluding electrical materials and mechanical services	108.5	109.7	110.0	110.7	110.6	110.9	114.0
All electrical materials	113.5	119.4	112.0	110.8	110.4	109.8	115.6
All mechanical services	108.9	114.1	114.9	114.7	114.8	114.8	115.2
All plumbing materials	112.6	118.9	120.1	120.9	121.6	124.3	130.2
All groups	108.9	111.1	110.9	111.3	111.2	111.3	114.0

Base of each index: year 1989-90=100.0

10

LIVESTOCK SLAUGHTERINGS

<i>Period</i>	<i>Cattle</i>	<i>Calves</i>	<i>Sheep</i>	<i>Lambs</i>	<i>Pigs</i>	<i>Chickens</i>
	'000	'000	'000	'000	'000	'000
1994-95	1 467.3	635.6	3 229.6	6 303.2	1 196.9	77 193.1
1995-96	1 523.6	589.8	2 488.0	5 897.7	1 142.1	85 410.9
1996-97 p	1 675.9	697.3	2 806.6	5 978.9	1 197.3	86 732.6
1996						
December	138.3	8.7	276.1	528.8	103.1	7 780.8
1997 p						
January	159.1	7.9	325.8	534.0	93.0	7 661.6
February	148.6	6.5	306.1	460.5	96.9	6 863.8
March	131.0	15.9	235.6	466.5	90.3	6 520.7
April	165.4	42.4	262.4	559.6	111.2	7 244.5
May	155.0	55.8	226.7	519.1	113.5	6 867.5
June	139.3	75.1	175.8	475.1	105.4	6 692.3
July	148.3	105.2	192.3	541.0	118.8	8 263.5
August	132.2	185.5	195.8	442.2	104.2	7 152.4
September	129.4	178.5	234.5	537.6	108.1	7 546.2
October	147.3	80.0	322.7	582.7	107.9	8 442.6
November	140.6	28.3	310.1	565.1	98.9	7 187.8
December	163.9	11.8	340.5	583.1	115.7	8 240.7
1998 p						
January	165.3	11.1	339.3	539.2	104.7	8 183.6
February	165.0	8.8	422.0	472.8	104.2	7 695.9

11

MEAT PRODUCTION

<i>Period</i>	<i>Meat (carcass weight)</i>					<i>Dressed weight of chickens</i>
	<i>Beef</i>	<i>Veal</i>	<i>Mutton</i>	<i>Lamb</i>	<i>Pigmeat</i>	
	<i>tonnes</i>	<i>tonnes</i>	<i>tonnes</i>	<i>tonnes</i>	<i>tonnes</i>	
1994-95	335 059	14 428	64 440	111 202	84 728	109 515
1995-96	348 649	12 009	50 910	110 172	83 052	127 736
1996-97 p	373 818	14 293	55 545	111 403	85 872	129 930
1996						
December	31 546	222	5 625	9 875	7 374	11 780
1997 p						
January	35 913	214	6 500	10 034	6 616	11 173
February	33 272	170	5 930	8 730	6 845	11 030
March	28 959	359	4 484	8 813	6 322	9 188
April	36 393	891	5 005	10 666	7 982	10 256
May	33 598	1 102	4 315	9 849	8 245	10 367
June	30 312	1 442	3 474	9 036	7 694	9 999
July	31 773	2 060	3 733	10 112	8 594	13 039
August	28 256	3 658	3 773	8 498	7 596	10 842
September	28 241	3 565	4 663	10 001	7 943	11 910
October	31 971	1 618	6 521	10 759	8 003	13 479
November	30 971	638	6 189	10 558	7 211	11 500
December	35 616	286	6 861	11 001	8 100	13 215
1998 p						
January	35 729	281	6 504	10 135	7 577	13 372
February	37 299	213	8 235	8 600	7 586	12 372

Period	NEW DWELLING UNITS(a)							NON-RESIDENTIAL BUILDING(b)			
	Private sector		Public sector		Total(c)		Conversions etc.(d)	Alterations and additions to residential buildings	Private sector	Total	Total all building
	no.	\$m	no.	\$m	no.	\$m					
MELBOURNE STATISTICAL DIVISION											
1995-95	20 916	2 113.1	888	69.8	21 804	2 182.9	1 330	571.9	1 072.3	1 655.8	4 410.6
1995-96	15 676	1 624.3	1 068	86.5	16 744	1 710.8	617	467.2	1 352.5	1 934.5	4 112.5
1996-97	19 648	2 183.1	447	35.8	20 095	2 218.9	1 189	592.3	1 527.1	2 303.0	5 114.1
1996											
November	1 297	145.8	21	1.1	1 318	146.9	40	40.2	130.1	242.8	430.0
December	1 270	139.4	17	1.8	1 287	141.3	208	39.0	142.8	162.1	342.4
1997											
January	1 561	162.2	37	6.0	1 598	168.2	24	39.1	168.7	202.1	409.5
February	1 736	188.4	9	0.6	1 745	189.0	223	65.0	140.2	272.0	525.9
March	1 848	195.1	12	1.2	1 860	196.3	36	50.7	150.7	184.1	431.1
April	1 823	199.4	56	5.8	1 879	205.2	76	51.8	129.6	156.8	413.9
May	1 963	241.9	23	1.2	1 986	243.2	70	49.0	106.4	136.6	428.8
June	1 744	214.5	4	0.2	1 748	214.6	300	74.2	103.0	351.4	640.2
July	1 998	216.9	38	1.9	2 036	218.9	25	51.1	132.1	176.2	446.2
August	2 468	253.7	78	7.4	2 546	261.1	55	54.2	122.8	142.0	457.3
September	2 152	239.1	57	3.8	2 209	242.9	222	68.5	173.5	192.1	503.6
October	1 802	203.3	77	7.0	1 879	210.3	64	69.0	180.0	238.3	517.6
November	2 450	291.7	71	4.9	2 521	296.6	52	49.1	195.8	213.6	559.3
December	2 072	232.1	71	6.1	2 143	238.2	60	43.6	440.7	450.6	732.3
1998											
January	1 855	230.7	23	1.5	1 878	232.2	74	44.2	174.2	203.1	479.5
TOTAL VICTORIA											
1994-95	28 509	2 772.2	1 409	101.8	29 918	2 874.0	1 347	685.1	1 274.7	1 975.2	5 534.3
1995-96	21 643	2 171.1	1 401	108.7	23 044	2 279.7	663	590.1	1 721.6	2 452.4	5 322.3
1996-97	26 041	2 793.3	596	46.7	26 610	2 839.9	1 240	728.5	1 879.7	2 839.8	6 408.2
1996											
November	1 832	196.9	46	2.8	1 878	199.7	43	52.1	157.7	286.5	538.3
December	1 763	186.9	26	2.8	1 789	189.7	216	49.4	177.7	221.6	460.8
1997											
January	2 039	209.6	49	6.9	2 088	216.4	25	50.1	188.9	226.6	493.1
February	2 274	239.7	17	1.1	2 291	240.8	225	76.8	173.1	359.4	677.0
March	2 407	249.8	12	1.2	2 419	251.0	37	63.1	180.8	225.1	539.2
April	2 380	254.5	77	7.3	2 457	261.8	80	63.5	202.0	237.0	562.3
May	2 565	298.9	37	2.2	2 602	301.1	74	62.5	135.6	178.3	541.9
June	2 255	264.5	11	0.6	2 266	265.0	302	84.6	120.3	382.1	731.8
July	2 563	275.5	42	2.3	2 605	277.8	27	62.9	161.8	227.9	568.6
August	3 084	316.0	79	7.7	3 163	323.7	57	65.7	159.5	184.5	573.9
September	2 824	307.6	113	7.2	2 937	314.8	225	83.6	209.9	242.2	640.6
October	2 505	273.8	112	9.2	2 617	283.0	64	84.4	204.8	279.2	646.7
November	3 083	354.6	110	7.5	3 193	362.1	54	60.1	213.5	247.3	669.5
December	2 675	293.5	90	7.9	2 765	301.4	65	55.6	456.7	470.2	827.2
1998											
January	2 305	278.0	57	3.7	2 362	281.7	77	56.7	201.7	234.1	572.6

(a) Valued at \$10,000 and over.

(b) Valued at \$50,000 and over.

(c) Excludes dwelling units created as a result of conversions or construction of non-residential buildings.

(d) Dwelling units created as a result of conversions or construction of non-residential buildings.

13

NEW HOUSES AND OTHER RESIDENTIAL BUILDINGS

	NEW HOUSES				NEW OTHER RESIDENTIAL BUILDINGS			
	Approved	Commenced	Under Construction	Completed	Approved	Commenced	Under Construction	Completed
	<i>no.</i>	<i>no.</i>	<i>no.</i>	<i>no.</i>	<i>no.</i>	<i>no.</i>	<i>no.</i>	<i>no.</i>
1994-95	25 885	25 846	10 668	27 380	4 033	3 612	2 765	2 892
1995-96	18 889	19 399	8 066	21 883	4 155	4 276	3 906	3 086
1996-97	19 805	18 652	8 937	17 613	6 805	6 047	4 151	5 727
1996								
June qtr	4 438	4 102	8 066	4 394	1 385	1 427	3 906	629
September qtr	4 631	4 453	8 623	3 848	1 876	1 722	4 111	1 480
December qtr	4 456	4 139	7 624	5 081	1 524	1 238	4 046	1 294
1997								
March qtr	4 924	4 597	8 176	3 997	1 874	1 560	4 046	1 553
June qtr	5 794	5 463	8 937	4 687	1 531	1 527	4 151	1 400
September qtr	6 732	5 578	9 515	4 980	1 973	1 754	3 852	1 986

14

VALUE OF BUILDING

Period	RESIDENTIAL BUILDINGS		NON-RESIDENTIAL BUILDINGS						Total
	New	Alterations and additions	Shops	Factories	Offices	Education	Health	Other	
	\$m	\$m	\$m	\$m	\$m	\$m	\$m	\$m	\$m
COMMENCED									
1994-95	2 907.7	678.6	323.4	211.4	384.2	293.3	140.8	583.8	5 523.2
1995-96	2 486.2	679.7	444.3	249.2	393.5	330	108.4	953.5	5 644.8
1996-97	2 692.2	761	348.2	343.8	508.5	410.3	303.6	1 003.3	6 371.1
1996									
June qtr	598.8	206.8	110	67.3	84.1	96.2	35.2	144.8	1 343.1
September qtr	648.1	152.8	90.4	95.9	179.1	70.7	101.9	129.9	1 468.8
December qtr	587.6	184.3	72.3	80.4	111.1	66.2	49.8	275.6	1 427.3
1997									
March qtr	666.8	188.9	88.3	93.2	114	59.4	48.5	228.4	1 487.5
June qtr r	789.7	235	97.2	74.4	104.3	214.1	103.4	369.6	1 987.6
September qtr	820.7	217.7	76.4	55.5	113.9	53.4	44.0	233.8	1 615.4
UNDER CONSTRUCTION AT END OF PERIOD									
1994-95	1 450.8	354.3	480.6	142.9	241.9	217.3	251.0	1 092.6	4 231.4
1995-96	1 472.5	339.4	235.5	141.4	139.2	248.1	123.9	1 390.9	4 091.0
1996-97	1 582.3	358.5	284.6	214.9	233.4	310.0	236.2	1 741.7	4 961.6
1996									
June qtr	1 472.5	339.4	235.5	141.4	139.2	248.1	123.9	1 390.0	4 091.0
September qtr	1 513.8	297.3	275.5	199.4	199.4	262.2	146.2	1 426.4	4 320.3
December qtr	1 402.4	284.5	249.8	183.6	201.8	224.3	157.9	1 594.5	4 298.8
1997									
March qtr	1 456.0	309.3	237.7	227.1	228.6	188.1	172.5	1 801.3	4 620.4
June qtr r	1 582.3	358.5	284.6	214.9	233.4	310.0	236.2	1 741.7	4 961.6
September qtr	1 660.5	385.4	175.0	176.9	193.0	341.6	244.9	916.0	4 093.3
COMPLETED									
1994-95	2 882.5	709.8	313.6	253.1	290.7	228.8	387.3	521.5	5 587.3
1995-96	2 489.6	689.0	715.1	249.9	514.1	302.2	234.7	844.4	6 038.9
1996-97	2 617.6	768.5	364.8	295.6	404.0	342.0	194.6	1 106.7	6 093.8
1996									
June qtr	521.4	147.7	217.6	60.0	98.1	72.9	33.9	392.8	1 544.6
September qtr	606.0	204.1	85.6	41.5	119.6	55.7	79.2	175.6	1 367.4
December qtr	710.6	200.5	106.0	110.8	79.2	103.1	39.0	220.4	1 569.5
1997									
March qtr	616.3	168.6	121.2	56.9	100.5	88.1	34.8	271.0	1 457.4
June qtr r	684.7	195.3	52.0	86.5	104.6	95.0	41.5	439.9	1 699.5
September qtr p	759.8	197.7	189.5	102.5	161.5	30.6	38.3	1 095.6	2 575.3

15

PRIVATE NEW CAPITAL EXPENDITURE, BY SELECTED INDUSTRIES AND TYPE OF ASSET

Period	SELECTED INDUSTRIES				TYPE OF ASSET	
	Mining	Manufacturing	Other selected industries	Total	New buildings and structures	Equipment, plant and machinery
	\$m	\$m	\$m	\$m	\$m	\$m
ACTUAL						
1995-96	590	3 544	6 160	10 294	3 126	7 168
1996-97	758	3 447	r 7 290	11 496	r 3 379	8 117
1996						
September qtr	125	808	r 1 639	2 573	789	1 784
December qtr	301	987	1 862	3 150	1 039	2 110
1997						
March qtr	162	772	1 613	2 547	789	1 758
June qtr	170	880	2 176	3 226	761	2 465
September qtr	r 164	r 775	r 1 563	r 2 502	r 694	r 1 807
December qtr	378	903	1 794	3 075	831	2 244
EXPECTED						
1997-98	r 1 265	r 3 244	r 6 263	r 10 772	r 2 997	r 7 775
1998-99	872	2 400	5 644	8 915	3 038	5 877

16

COMMERCIAL FINANCE COMMITMENTS

Period	FIXED LOAN FACILITIES							TYPE OF LENDER		
	Construction	Purchase of real property	Purchase of plant and equipment	Wholesale	Other	Total	Revolving credit facilities	Total commitments	Banks	All other lenders
	\$m	\$m	\$m	\$m	\$m	\$m	\$m	\$m	\$m	\$m
1996										
November	76.4	290.8	176.0	78.0	525.7	1 147.1	1 913.0	3 060.1	2 105.2	954.9
December	82.8	293.8	172.5	69.1	705.7	1 324.0	1 546.0	2 870.0	2 078.9	791.1
1997										
January	54.7	284.2	131.8	69.3	450.7	990.7	2 538.2	3 528.9	1 688.3	1 840.6
February	77.4	310.8	140.1	74.6	316.8	919.6	1 711.3	2 630.9	2 159.6	471.3
March	92.8	369.0	183.2	84.8	707.3	1 437.2	1 113.6	2 550.8	2 203.7	347.1
April	76.8	355.2	166.4	79.3	443.5	1 121.3	2 092.8	3 214.1	2 862.2	387.9
May	78.7	738.2	154.5	90.2	863.5	1 925.1	2 425.8	4 350.9	3 738.8	612.1
June	75.4	408.9	172.8	120.2	824.8	1 602.2	2 232.2	3 834.4	2 929.6	904.8
July	134.1	439.1	178.7	148.9	1 162.2	2 063.0	2 470.0	4 533.0	3 757.0	776.0
August	98.8	411.9	168.5	93.7	692.8	1 465.7	2 193.6	3 659.3	2 827.0	832.3
September	153.7	500.3	179.2	124.4	583.9	1 541.6	2 560.3	4 101.9	3 545.9	556.0
October	93.0	549.4	279.7	222.0	471.8	1 615.9	2 512.8	4 128.7	3 180.7	948.0
November	77.4	463.8	r 138.3	r 81.2	525.1	r 1 285.9	1 475.9	r 2 761.9	2 279.0	r 482.9
December	167.1	539.6	r 164.7	r 123.8	r 1 729.9	r 2 725.0	1 862.3	r 4 587.3	3 996.0	r 591.3
1998										
January	76.8	487.7	121.9	83.1	372.6	1 142.1	1 289.1	2 431.2	2 154.8	276.4

17

SECURED HOUSING FINANCE COMMITMENTS

Period	Original series		Seasonally adjusted		Trend estimates	
	Dwelling units	\$m	Dwelling units	\$m	Dwelling units	\$m
1996						
November	8 743	798	9 044	830	9 389	853
December	8 557	810	9 140	837	9 233	852
1997						
January	7 816	741	9 284	865	9 157	861
February	8 759	818	9 021	857	9 214	881
March	8 634	839	9 172	914	9 352	907
April	10 637	1 031	9 778	954	9 510	936
May	10 302	1 018	9 796	972	9 635	960
June	10 081	1 022	9 784	992	9 733	982
July	10 199	1 039	9 564	955	r 9 802	1 002
August	9 890	1 031	9 777	1 040	r 9 853	1 021
September	10 063	1 060	10 138	1 047	r 9 913	1 038
October	10 529	1 109	9 927	1 051	r 10 002	r 1 055
November	9 583	1 019	10 074	1 091	r 10 100	r 1 069
December	r 10 192	r 1 090	r 10 086	r 1 054	r 10 193	r 1 081
1998						
January	8 231	885	10 449	1 098	10 283	1 091

18

RETAIL TURNOVER, BY INDUSTRY (EXCLUDING MOTOR VEHICLES, PARTS, PETROL, ETC.)

Month	Food	Department	Clothing	Household	Recreational	Other	Hospitality	Total
	retailing	stores	and soft good retailing	good retailing	good retailing	retailing	and services	
	\$m	\$m	\$m	\$m	\$m	\$m	\$m	\$m
1996								
December	1 185.9	442.4	218.4	446.1	246.7	363.9	363.3	3 266.6
1997								
January	1 108.7	197.4	153.2	347.3	144.8	220.6	321.1	2 493.1
February	1 009.1	171.9	118.2	320.1	132.2	220.5	284.9	2 256.9
March	1 084.0	214.3	143.1	319.9	142.2	229.8	326.0	2 459.1
April	1 053.7	212.6	173.4	325.2	147.0	242.5	310.7	2 465.2
May	1 104.6	241.0	169.8	327.6	141.1	254.6	304.8	2 543.5
June	1 028.5	200.4	147.1	333.1	134.8	235.7	288.4	2 367.9
July	1 069.4	226.3	164.2	331.4	139.6	254.6	305.0	2 490.5
August	1 069.6	198.2	148.1	336.7	144.1	268.8	307.6	2 473.0
September	1 047.4	226.6	154.5	325.1	151.6	272.7	304.8	2 482.6
October	1 124.7	232.6	168.7	372.2	162.6	271.5	328.4	2 660.7
November	1 101.1	272.3	178.6	373.3	169.4	264.6	320.6	2 679.9
December	1 256.5	465.3	245.5	482.2	250.5	383.6	371.9	3 455.3
1998								
January	1 128.9	214.2	r 155.6	320.0	158.7	254.7	r 339.4	r 2 571.5
February	1 022.6	174.2	134.6	280.6	142.7	236.5	297.0	2 288.3

19

EXPORTS AND IMPORTS, BY SECTIONS OF THE AUSTRALIAN EXPORT AND IMPORT CLASSIFICATIONS — VICTORIA

Section	1996-97		8 MONTHS ENDING FEB 1998	
	Imports	Exports	Imports	Exports
	\$m	\$m	\$m	\$m
0 Food and live animals chiefly for food	1 002	3 674	763	2 413
1 Beverages and tobacco	103	124	89	102
2 Crude materials, inedible (except fuels)	536	1 740	380	1 296
3 Mineral fuels, lubricants, and related materials	934	887	524	630
4 Animal and vegetable oils, fats and waxes	95	83	63	76
5 Chemicals and related products, n.e.c.	2 478	877	1 871	594
6 Manufacturing goods classified chiefly by material	3 706	2 323	2 870	1 575
7 Machinery and transport equipment	10 956	3 392	8 143	2 016
8 Miscellaneous manufactured articles	4 351	993	3 442	685
9 Commodities and transactions of merchandise trade, n.e.c.	932	2 218	677	1 363
Total	25 093	16 310	18 823	10 750

20

OVERSEAS TRADE, MAJOR TRADING PARTNERS — VICTORIA(a)

Country	1995-96		1996-97		8 MONTHS ENDING FEB 1998	
	Imports	Exports	Imports	Exports	Imports	Exports
	\$m	\$m	\$m	\$m	\$m	\$m
Belgium-Luxembourg	253	74	242	66	161	40
Brazil	174	77	125	81	97	53
Canada	453	101	394	123	261	72
China	1 675	641	1 755	658	1 513	443
Fiji	60	215	119	236	84	164
Finland	239	9	169	8	134	6
France	536	143	711	162	429	120
Germany	1 994	264	1 923	280	1 370	156
Hong Kong	241	821	267	812	237	750
India	234	139	231	239	181	133
Indonesia	378	367	507	428	410	243
Italy	807	249	832	320	608	290
Japan	3 429	1 952	3 097	1 525	2 555	1 111
Korea, Republic of	634	1 921	671	2 098	517	853
Malaysia	458	737	508	669	422	383
Mexico	55	43	64	52	47	53
Netherlands	233	60	237	39	164	47
New Zealand	1 207	1 598	1 247	2 141	872	1 013
Pakistan	72	77	75	55	68	70
Papua New Guinea	128	237	232	269	123	161
Philippines	117	339	108	372	82	278
Saudi Arabia	225	194	203	168	65	144
Singapore	571	1 162	468	893	326	652
South Africa	83	207	100	292	95	177
Sweden	591	69	502	65	408	27
Switzerland	288	45	241	66	172	15
Taiwan	773	663	792	696	588	460
Thailand	322	513	335	412	264	243
United Kingdom	1 502	373	1 635	416	1 078	282
United States of America	5 839	788	5 944	958	4 400	916
Other and unknown	1 092	1 332	1 359	1 710	1 092	1 395
Total	24 663	15 410	25 093	16 310	18 823	10 750

(a) The list of countries in this table reflects the volume of trade with Victoria. Information about Victoria's trade with other countries is available on request.

21

VALUE OF OVERSEAS TRADE, VICTORIA AND AUSTRALIA

Period	VICTORIA			AUSTRALIA		
	Imports	Exports	Excess of exports	Imports	Exports (including re-exports)	Excess of exports
	\$m	\$m	\$m	\$m	\$m	\$m
1994-95	23 967	13 008	-10 959	74 619	67 052	-7 567
1995-96	24 663	15 410	-9 253	77 792	76 005	-1 787
1996-97	25 093	16 310	-8 783	78 998	r 78 940	r -58
1996						
December	2 046	1 340	-706	6 694	6 737	43
1997						
January	1 977	1 146	-831	6 425	6 019	-406
February	1 935	r 1 350	r -585	6 072	r 6 426	r 354
March	1 865	1 397	-468	5 985	6 634	649
April	2 165	1 347	-818	6 749	6 638	-111
May	2 025	1 992	-33	6 448	7 630	1 182
June	2 064	1 325	-739	6 876	r 6 839	r -37
July	2 361	1 289	-1 072	7 419	7 130	-289
August	2 264	1 185	-1 079	r 7 048	7 186	r 138
September	2 338	1 346	-992	r 7 355	r 7 204	r -151
October	r 2 604	1 421	r -1 183	r 7 945	r 7 625	r -320
November	2 264	r 1 540	r -724	7 191	r 7 629	r 438
December	r 2 426	r 1 508	r -918	7 921	r 7 813	r -108
1998						
January	r 2 269	1 094	r -1 175	r 7 114	r 6 298	r -816
February	2 297	1 366	-931	6 952	6 687	-265

22

TOURIST ACCOMMODATION, MELBOURNE AND VICTORIA

Period	HOTELS, MOTELS, ETC. WITH FACILITIES				SHORT-TERM CARAVAN PARKS			
	Establishments	Capacity, guest rooms	Room occupancy rates	Takings from accommodation	Establishments	Capacity, sites and cabins	Site occupancy rates	Takings from accommodation
	no.	no.	%	\$'000	no.	no.	%	\$'000
MELBOURNE STATISTICAL DIVISION								
1996								
September qtr	239	14 440	66	100 835	53	5 728	44	1 771
December qtr	241	14 509	71	114 046	52	5 877	51	2 262
1997								
March qtr	240	14 456	74	125 553	52	5 899	59	2 368
June qtr	240	14 953	67	111 910	52	5 878	46	1 618
September qtr	249	15 142	67	119 066	51	5 689	46	1 785
December qtr	247	15 253	70	127 777	51	5 700	53	2 297
TOTAL VICTORIA								
1996								
September qtr	1 013	29 877	52	141 778	441	54 226	36	12 239
December qtr	1 013	29 918	56	152 611	441	54 390	41	17 402
1997								
March qtr	1 012	29 869	60	169 396	442	54 394	49	21 407
June qtr	1 012	30 325	53	148 700	440	54 056	39	12 340
September qtr	1 046	30 799	53	163 681	442	53 873	37	13 513
December qtr	1 040	30 904	56	168 260	441	54 226	36	12 239

LIST OF REFERENCES(a)

	Table	
DEMOGRAPHY	1	<i>Australian Demographic Statistics</i> (Cat. no. 3101.0) (quarterly)
	2	<i>Demography, Victoria</i> (Cat. no. 3311.2) (annual)
LABOUR	3	<i>Labour Force, Victoria</i> (Cat. no. 6202.2) (quarterly)
	4	<i>Labour Force, Australia</i> (Cat. no. 6203.0) (monthly)
	5	<i>Job Vacancies and Overtime, Australia</i> (Cat. no. 6354.0) (quarterly)
WAGES AND PRICES	6	<i>Industrial Disputes, Australia</i> (Cat. no. 6321.0) (monthly)
	7	<i>Average Weekly Earnings, States and Australia</i> (Cat. no. 6302.0) (quarterly)
	8	<i>Consumer Price Index</i> (Cat. no. 6401.0) (quarterly)
	9	<i>Price Index of Materials Used in Building Other Than House Building, Six State Capital Cities</i> (Cat. no. 6407.0) (quarterly) <i>Price Index of Materials Used in House Building, Six State Capital Cities</i> (Cat. no. 6408.0) (quarterly)
MEAT PRODUCTION	10, 11	<i>Livestock Products, Australia</i> (Cat. no. 7215.0) (monthly)
BUILDING	12	<i>Building Approvals, Victoria</i> (Cat. no. 8731.2) (monthly)
	13, 14	<i>Building Activity, Victoria</i> (Cat. no. 8752.2) (quarterly)
FINANCE	15	<i>State Estimates of Private New Capital Expenditure</i> (Cat. no. 5646.0) (quarterly)
	16, 17	<i>Housing Finance for Owner Occupation, Australia</i> (Cat. no. 5609.0) (monthly)
RETAIL	18	<i>Retail Trade, Australia</i> (Cat. no. 8501.0) (monthly)
TRADE	19	<i>Foreign Trade Australia: Fasttraccs Database</i>
	20	<i>Overseas Trade: Fasttraccs Database</i>
	21	<i>Overseas Trade: Fasttraccs Database</i>
TOURISM	22	<i>Tourist Accommodation, Victoria</i> (Cat. no. 8635.2) (quarterly)

(a) As at March 1998. Publication names and catalogue numbers are subject to revision or change.

SELF-HELP ACCESS TO STATISTICS

PHONE Call 1900 986 400 for the latest statistics on CPI, Labour Force, Earnings, National Accounts, Balance of Payments and other topics. (Call cost is 75c per minute)

INTERNET <http://www.abs.gov.au>

LIBRARY A range of ABS publications is available from public and tertiary libraries Australia wide. Contact your nearest library to determine whether it has the ABS statistics you require.

WHY NOT SUBSCRIBE?

PHONE +61 1300 366 323

FAX +61 3 9615 7848

CONTACTING THE ABS

ABS provides a range of services, including: a telephone inquiry service; information consultancy tailored to your needs; survey, sample and questionnaire design; survey evaluation and methodological reviews; and statistical training.

<i>INQUIRIES</i>	<i>By phone</i>	<i>By fax</i>
Canberra	02 6252 6627	02 6253 1404
Sydney	02 9268 4611	02 9268 4668
Melbourne	03 9615 7755	03 9615 7798
Brisbane	07 3222 6351	07 3222 8283
Perth	08 9360 5140	08 9360 5955
Adelaide	08 8237 7400	08 8237 7566
Hobart	03 6222 5800	03 6222 5995
Darwin	08 8943 2111	08 8981 1218

POST Client Services, ABS, PO Box 10, Belconnen, ACT 2616

EMAIL client.services@abs.gov.au



2130320003981
ISSN 0158-202X

RRP \$16.00